

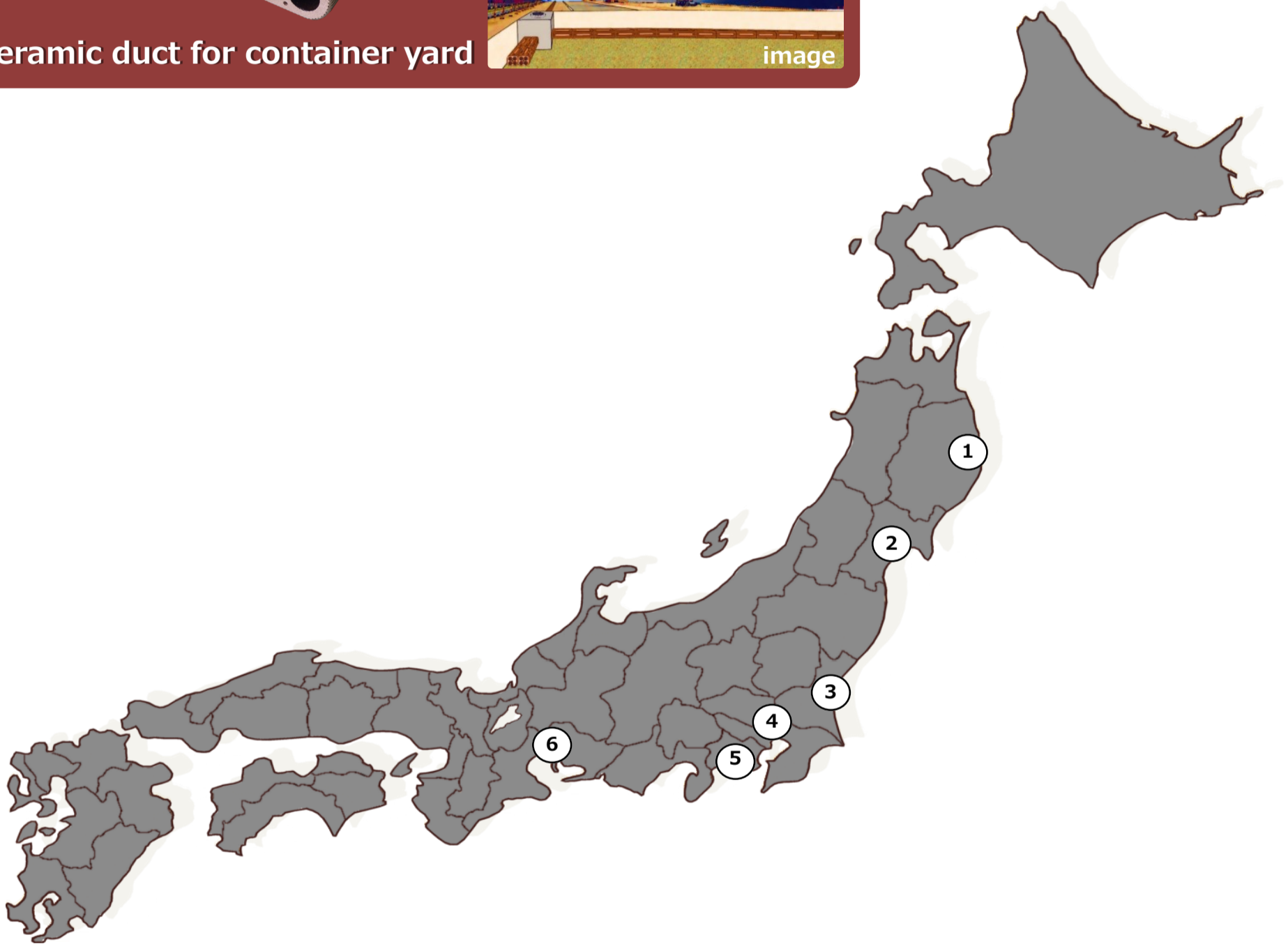
Delivery results at the container yard

It has been used in container yard because ceramics is strong against salt damage.

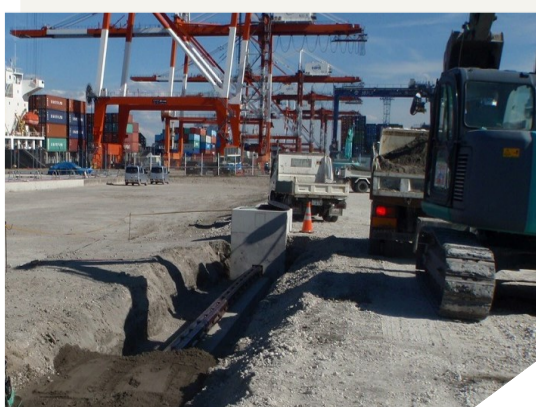


Ceramic duct for container yard

image



① Kamaishi port	③ Ibaraki port	⑤ Yokohama port
② Sendai-shiogama port	④ Tokyo port	⑥ Nagoya port



Sugie Seito Co., Ltd.

<https://www.sugie.co.jp/>